



SkySafari

by elewana

The Ultimate African Experience

SkySafari  
Tanzania Classic

ROUTE MAP • ITINERARY • DEPARTURE DATES • RATES & SEASONS 2020

# Tanzania Classic : The Route Map



Created to highlight the crowning jewels of Tanzania's safari destinations, this classic 8-day journey takes you through the baobab and elephant dotted landscape of Tarangire, to the breathtaking Eden that is the Ngorongoro Crater, finishing in the world-renowned Serengeti, with its endless horizons and abundant wildlife.

# Tanzania Classic : Itinerary in Brief

DAY	LOCATION	ACTIVITIES	OVERNIGHT
Day 1	Arusha	<ul style="list-style-type: none"> <li>• Arrival at Kilimanjaro International Airport</li> <li>• SkySafari Road Transfer to Arusha Coffee Lodge</li> <li>• Pure relaxation in a Plantation Suite (subject to availability)</li> <li>• Dinner at Arusha Coffee Lodge</li> </ul>	Arusha Coffee Lodge
Day 2	Arusha - Tarangire	<ul style="list-style-type: none"> <li>• Breakfast at Arusha Coffee Lodge</li> <li>• Bean-To-Cup Coffee Estate Tour</li> <li>• Shanga Cultural Experience</li> <li>• Lunch at Arusha Coffee Lodge</li> <li>• The Safari takes to the air - 14:00 Departure to Kuro Airstrip</li> <li>• Shared Game Drive through Tarangire National Park to Tarangire Treetops</li> <li>• A Traditional Maasai Boma Dinner</li> </ul>	Tarangire Treetops
Day 3	Tarangire	<ul style="list-style-type: none"> <li>• Breakfast at Tarangire Treetops</li> <li>• Visit to the Maasai Village</li> <li>• Morning shared Game Drive</li> <li>• Lunch at Tarangire Treetops</li> <li>• Walking Safari</li> <li>• Spectacular sunset cocktails in the bush</li> <li>• Night shared Game Drive</li> <li>• Dinner at Tarangire Treetops</li> </ul>	Tarangire Treetops
Day 4	Tarangire - Ngorongoro	<ul style="list-style-type: none"> <li>• Breakfast at Tarangire Treetops</li> <li>• Game-drive in Tarangire National Park en-route to Kuro Airstrip</li> <li>• Picnic Lunch in Tarangire National Park</li> <li>• Flight to Manyara Airstrip</li> <li>• Road Transfer to The Manor at Ngorongoro in time for High Tea</li> <li>• Dinner at The Manor at Ngorongoro</li> </ul>	The Manor at Ngorongoro
Day 5	Ngorongoro	<ul style="list-style-type: none"> <li>• Early Breakfast at The Manor at Ngorongoro</li> <li>• Ngorongoro Crater Tour</li> <li>• Picnic Luncheon in the Crater</li> <li>• Drive to The Manor at Ngorongoro</li> <li>• Private Dining at The Manor at Ngorongoro</li> </ul>	The Manor at Ngorongoro
Day 6	Ngorongoro - Serengeti	<ul style="list-style-type: none"> <li>• Breakfast at The Manor at Ngorongoro</li> <li>• Visit to Lake Manyara National Park en route to Manyara Airstrip or relaxing morning at The Manor</li> <li>• Picnic lunch in Lake Manyara National Park or lunch at The Manor</li> <li>• Road Transfer to Manyara Airstrip</li> <li>• Flight to Serengeti National Park</li> <li>• Road Transfer to Serengeti Migration or Serengeti Pioneer Camp arriving in time for Sundowners</li> <li>• Dinner at Serengeti Migration Camp / Pioneer Camp</li> </ul>	Serengeti Migration Camp or Serengeti Pioneer Camp
Day 7	Serengeti	<ul style="list-style-type: none"> <li>• Breakfast at Serengeti Migration / Pioneer Camp</li> <li>• Shared Game Drives in Serengeti National Park</li> <li>• Lunch in the bush</li> <li>• Dining under the stars</li> </ul>	Serengeti Migration Camp or Serengeti Pioneer Camp
Day 8	Serengeti - Arusha	<ul style="list-style-type: none"> <li>• Shared Game Drive on the Serengeti plains</li> <li>• Breakfast &amp; Lunch at the Camp</li> <li>• Shared Game Drive en-route to Airstrip</li> <li>• Flight to Arusha Airport at 16:00</li> <li>• Road Transfer to Arusha Coffee Lodge</li> <li>• Depending on your outbound flight, there is time to refresh in a day room at Arusha Coffee Lodge</li> <li>• Road Transfer to Kilimanjaro Airport and Departure</li> </ul>	

# Tanzania Classic : Itinerary

## Day 1 : Arusha

On arrival to Kilimanjaro International Airport, our dedicated SkySafari Guest Representative welcomes our SkySafari guests to Tanzania. Each guest is chauffeured to Arusha Coffee Lodge, one hour's drive from Kilimanjaro itself.



### ARUSHA COFFEE LODGE

Situated on the foothills of Mount Meru, Arusha Coffee Lodge nestles within one of Tanzania's largest working coffee plantations. Characterized by plantation-style home comfort and luxurious guest amenities, Arusha Coffee Lodges' Plantation Suites are a haven for calm and composure before or after a safari.

SkySafari guests' stay at Arusha Coffee Lodge will be on an all-inclusive basis. On arrival at the Lodge our guests receive a warm and friendly greeting and immediately sample a cool and refreshing coffee-infused welcome drink. All SkySafari guests receive an immediate room upgrade\* to one of the luxurious Plantation Suites that lie surrounded by the ever-present coffee trees of the plantation. (\*subject to availability)

## Day 2 & 3 : Tarangire National Park



### TARANGIRE TREETOPS

On landing at Tarangire airstrip, our SkySafari Guests are met by the Tarangire Treetops Guide. The transfer to Tarangire Treetops includes a fascinating game-drive through the famed Tarangire National Park, home to the largest concentration of elephants in Tanzania. Tarangire is a dramatically beautiful and diverse eco system, boasting one of the largest concentrations of elephant in East Africa. These mobs of elephant are easily encountered, wet or dry. The swamps, tinged green year round, are the focus for 550 bird varieties, the most breeding species in one habitat anywhere in the world.

A truly unique accommodation experience, twenty luxury suites sit on elevated platforms among the branches of the surrounding baobab and marula trees, stirring up memories of childhood treehouses. Centred around a main bar and dining area, featuring a 1,000 year old baobab tree, Tarangire Treetops sits in a private 77,000 acre conservancy bordering the national park. Enjoy adventurous bush walks alongside elephants, and breathtaking sundowners atop Sunset Hill.

### ABOUT THE HOTEL

- 30 beautifully furnished Plantation houses (18 Plantation Rooms & 12 Plantation Suites)
- Split-level lounge areas
- Private decks overlooking the berry-laden coffee bushes
- Free wifi available in all guest rooms
- Gourmet restaurant
- Wood-fired pizza oven
- All-day bistro and bar
- Daily luncheon served in the gardens

### ABOUT THE LODGE

- 20 luxury elevated Treetops rooms made with local, natural materials and embellished with modern décor
- Each en-suite elevated Treetops room has a large private deck that invites you to soak in Tarangire's magical landscape
- Free wifi available in public areas
- Restaurant & bar all overlooking the endless plains of the Tarangire ecosystem

### HIGHLIGHTS & INCLUDED ACTIVITIES

- Unique accommodation experience in luxury 'treehouses'
- Located in a game-rich private community conservancy
- Shared game drives in custom-designed safari vehicles
- Bush walking with qualified guides in conservancy
- Extravagant bush breakfasts, spectacular sundowners
- Professional certified guides

## Day 4 & 5: Ngorongoro Crater



### THE MANOR AT NGORONGORO

Nestled adjacent to the breath taking Ngorongoro Conservation Area within the 1,500 acre Shangri-La Coffee estate, The Manor at Ngorongoro is a one-of-a-kind experience. African hospitality fused with old world Afro-European architecture and décor embraces you in luxuriant style surrounded by the natural splendour of the Tanzanian highlands and the world heritage site: The Ngorongoro Crater.

Standing on the edge and taking in the vast beauty of the Ngorongoro Crater is an experience that will remain forever with many visitors. The view is rivalled only by the wildlife spectacle that awaits on the floor of the crater, including the Big 5. The result of a volcanic eruption 2-3 Million years ago, the caldera floor covers 64,000 acres and encompasses open grassy plains, acacia thickets, riverine forest, and fresh and soda lakes.

Warmly greeted by the managers of The Manor, and having enjoyed The Manor's special 'High Tea', our SkySafari guests will be invited to their very own Manor Cottage to unpack, unwind and relax before being invited back to the Main House for evening dinner. And for those who wish to explore, the swimming pool, spa, games room and stables await discovery.

## Day 6 & 7: Serengeti National Park



### SERENGETI PIONEER CAMP / SERENGETI MIGRATION CAMP

Endless grassy plains meet the the endless blue skies in this world-famous wildlife destination. Designated a UNESCO World Heritage Site in 1981, Tanzania's oldest national park has attracted and inspired naturalists, filmmakers, writers, conservationists and tourists for many years with its abundance of wildlife and playing host to one of nature's greatest spectacles, the Great Migration.

Set on a kopje and boasting some of the best views over the central Serengeti plains, Serengeti Pioneer Camp represents a return to nature and traditional luxury safari adventures of yesteryear. Serengeti Migration Camp, set in northern Serengeti comprises of sumptuous tented suites thoughtfully positioned along the Grumeti River, offering fantastic game viewing and easy access to spectacular wildebeest river crossings.

## Day 8 : Arusha - Departure

After a leisurely lunch, our SkySafari guests once again take to the road for a shared game drive en-route to the airstrip for the onward flight to Arusha at 16:00. During this 50-minute flight, you will be able to see, from the air, the ever-changing landscape of the bush and the mountainous topography that reminds all who see it of Tanzania's violent geological past.

On arrival at Arusha airstrip, our SkySafari guests will be transferred to Arusha Coffee Lodge and will either be offered a day room to relax and freshen up before leaving for their onward flight or to be checked into a Plantation Suite for one final night\* of relaxation before flying out from Kilimanjaro the next day.

### ABOUT THE LODGE

- 18 individual guest rooms all with open fire places in 9 Manor Cottages
- 1 Stable Cottage (for families) inclusive of 3 guest bedrooms
- Careful positioning of the guest cottages ensuring privacy and intimacy
- Bar & lounge with open fire place
- Billiard room and TV room
- Swimming pool
- The Manor Spa
- Formal dining room
- Dining conservatory
- Private wine cellar
- Free wifi in all public areas

### HIGHLIGHTS & INCLUDED ACTIVITIES

- Lavish accommodations set in colourful manicured gardens on a coffee plantation
- Shared game drives into Ngorongoro Crater with a bush luncheon
- Optional game drives to Lake Manyara National Park
- Horse riding or biking through the coffee fields
- Spa treatments to relax and revitalise
- Professional certified guides

### ABOUT THE CAMPS

- Serengeti Pioneer Camp comprises of 11 ensuite tents and 1 two-bedroom Family Tent.
- Serengeti Migration Camp has 20 elevated tented suites set along the Grumeti River.
- Each camp enjoys an inviting pool and wonderful views.
- Free Wi-Fi in public areas.

### HIGHLIGHTS & INCLUDED ACTIVITIES

- Private and secluded areas within the Serengeti, rich with game
- Stunning views from camp over the surrounding plains
- Shared game drives in custom-designed safari vehicles
- Extravagant bush meals, spectacular sundowners
- Professional certified guides

# Tanzania Classic : Extensions

SkySafari are delighted to offer you customised extensions to any of the Elewana Collection properties. Kindly contact us for pricing solutions.



## ELEWANA ARUSHA COFFEE LODGE Arusha

A welcoming sanctuary of aromas, gourmet food and vibrant gardens, the perfect start or end to an African safari.



## ELEWANA TARANGIRE TREETOPS Tarangire National Park

Luxury elevated tree-top rooms, located south west of Arusha next to the Tarangire National Park.



## ELEWANA THE MANOR AT NGORONGORO Karatu

As unique in character as its idyllic locale, this Cape-Dutch style homestead provides a relaxing and stylish ambiance.



## ELEWANA SERENGETI PIONEER CAMP South Central Serengeti National Park

Offering dramatic views of the Serengeti plains that drift endlessly into the horizon.



## ELEWANA SERENGETI MIGRATION CAMP Northern Serengeti National Park

The perfect embodiment of a luxury bush safari experience.



## ELEWANA KILINDI ZANZIBAR Nungwi Zanzibar

Located on the northwest coast of Zanzibar, sits an oasis of tranquility and calm at Kilindi.



## ELEWANA AFROCHIC DIANI Diani Beach

Situated directly on the white sands of the sparkling Diani Beach, AfroChic is a boutique 'home away from home' retreat.



## ELEWANA TORTILIS CAMP Amboseli National Park

Magnificent views of Kilimanjaro, wonderful elephant viewing and delectable cuisine.



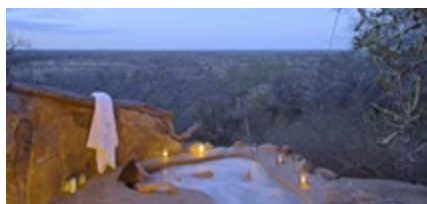
## ELEWANA KIFARU HOUSE Lewa Wildlife Conservancy

Intimate and homely atmosphere offering true luxury in the bush with unrivalled wildlife viewing.



## ELEWANA LEWA SAFARI CAMP Lewa Wildlife Conservancy

A unique retreat in a prolific conservancy and a UNESCO World Heritage Site.



## ELEWANA ELSA'S KOPJE Meru National Park

Unshamedly romantic and beautifully styled; a rugged, remote wilderness.



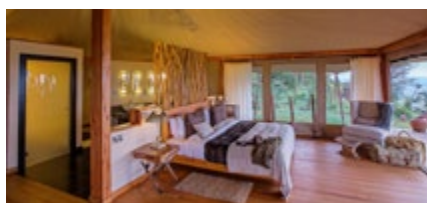
## ELEWANA ELEPHANT PEPPER CAMP Mara North Conservancy

Luxury bush camp with outstanding wildlife viewing in the heart of the Masai Mara.



## ELEWANA SAND RIVER MASAI MARA Masai Mara National Reserve

Luxury tented camp surrounded by abundant game, lying on the northerly route of the spectacular annual migration.



## ELEWANA LOISABA TENTED CAMP Loisaba Conservancy

Perched on the edge of an escarpment, sophistication & style celebrates the surrounding vast and wild landscape.

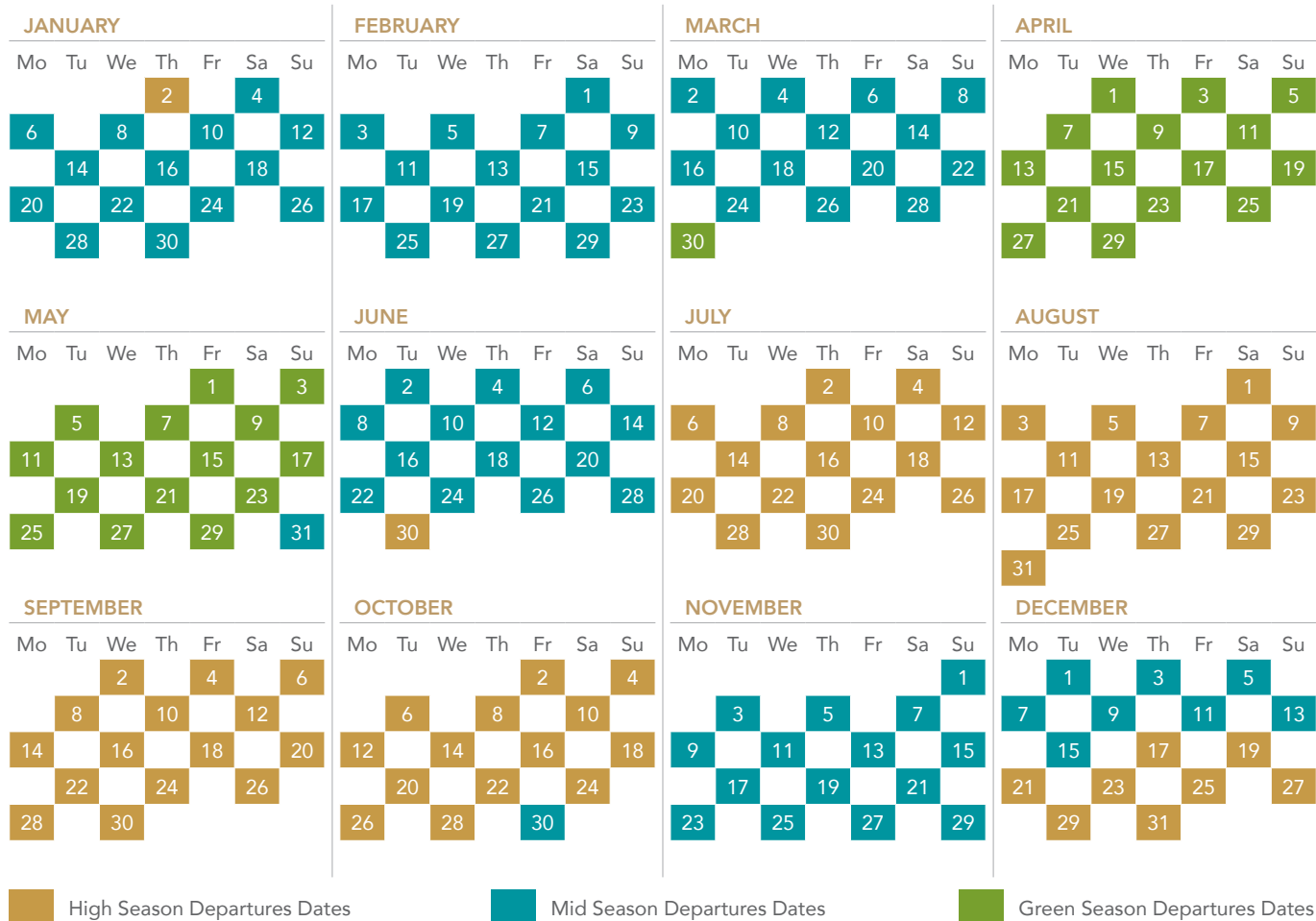


## ELEWANA LOISABA STARBEDS Loisaba Conservancy

Poised on a rocky kopje, the Star Beds are rolled out each night for guests to sleep under the endless African sky.

# Tanzania Classic : Departure Dates 2020

The dates highlighted below denote the first day of the SkySafari Classic itinerary and show the overnight stay at Arusha Coffee Lodge. Departures are guaranteed with a minimum of 2 guests.



# Tanzania Classic : Rates 2020

SEASONS	HIGH	MID	GREEN	PARK FEES	TOURISM DEVELOPMENT LEVY
Per person sharing a twin / double room	\$7,556	\$7,066	\$6,680	\$638	\$12
Per person in a single room	\$10,607	\$9,920	\$6,680	\$638	\$12
Child under 12 years of age sharing with 1 or 2 adults (maximum 2)	\$1,836	\$1,713	\$1,617	\$209	\$12
OPTIONS & ENHANCEMENTS	RATE				
Exclusive use of game drive vehicle per vehicle for the entire SkySafari Classic itinerary	\$3150				
Balloon Safari, per adult or child > 8 years	\$558 (Incl. of concession fee)				
Children in own room (minimum 2 / maximum 3)*	75% of the per person adult rate				
Children under 12 sharing with 1 adult. Child(ren) are paying under 12 child rate and the adult is paying adult single room rate					

## PACKAGE RATE INCLUDES;

- All domestic flights in SkySafari's executive aircraft (depending on schedule of international outbound flight)
- All statutory taxes for the flights mentioned above
- Full board accommodation, drinks\* and laundry services at Arusha Coffee Lodge - 1 night, Tarangire Treetops - 2 nights, The Manor at Ngorongoro - 2 nights - Serengeti Pioneer Camp (Jan-May) or Serengeti Migration Camp (Jun-Dec) - 2 nights.
- Shared daytime game drives in specially adapted 4x4 game drive vehicles
- Services of an English-speaking driver-guide
- Safari activities such as: Bean-to-cup coffee tour, shanga cultural experience, visit an authentic Masai village, game walk, sundowners in the bush, night game drive, massage
- All transfers, including to / from Kilimanjaro International Airport
- Medical Emergency Evacuation Insurance

\* Tarangire Treetops - Children under 14 years will not be allowed in their own room unless sharing with an adult

\*\* Drinks include: mineral water, soft drinks, juices, tea/coffee, beer, house wines, selected spirits

SkySafari  
 by elewana

The Ultimate African Experience